

# GMSmed



## SIREVIX DRF

MULTIFUNCTIONAL DIGITAL REMOTE CONTROLLED SYSTEM



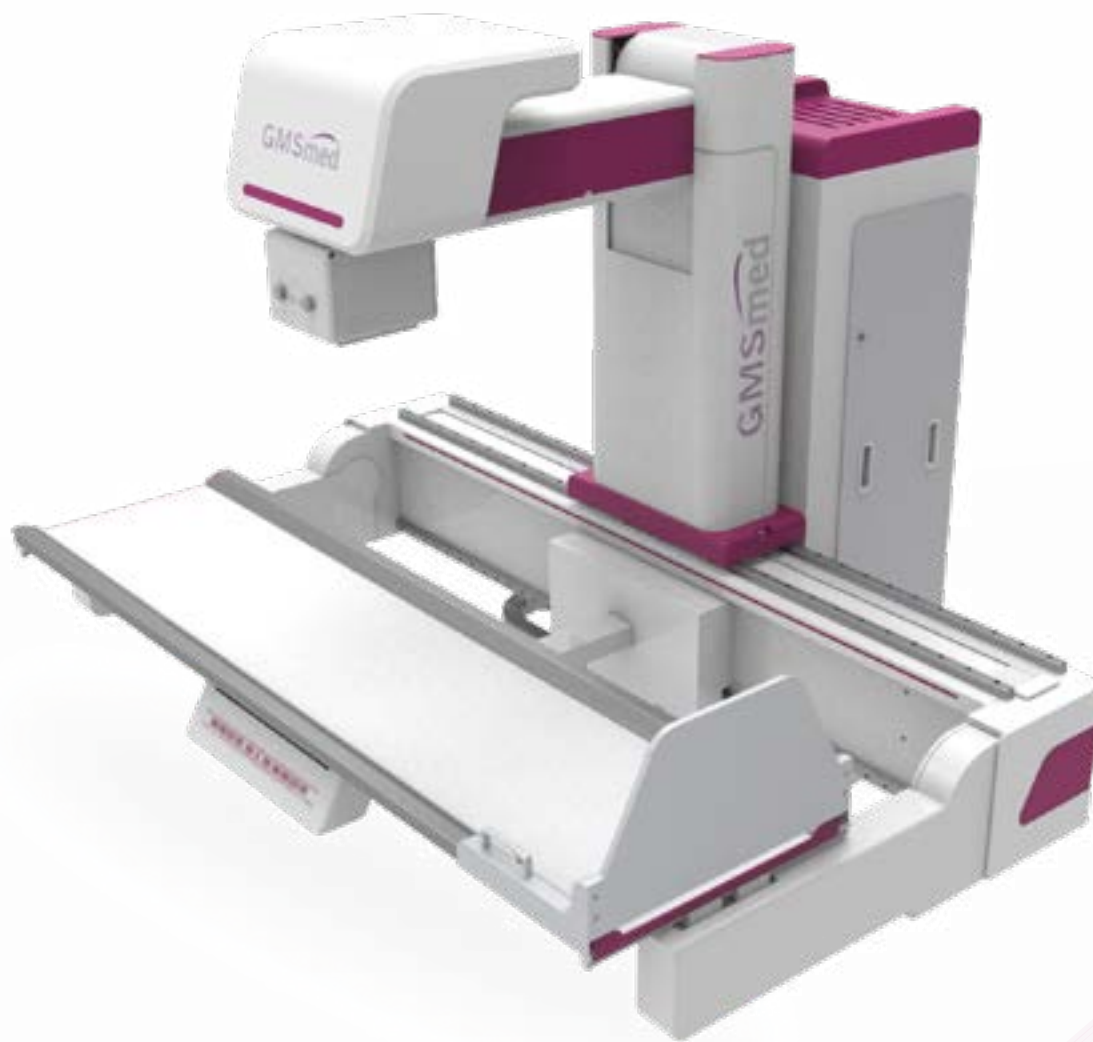
MADE IN ITALY

# The diagnostic's evolution

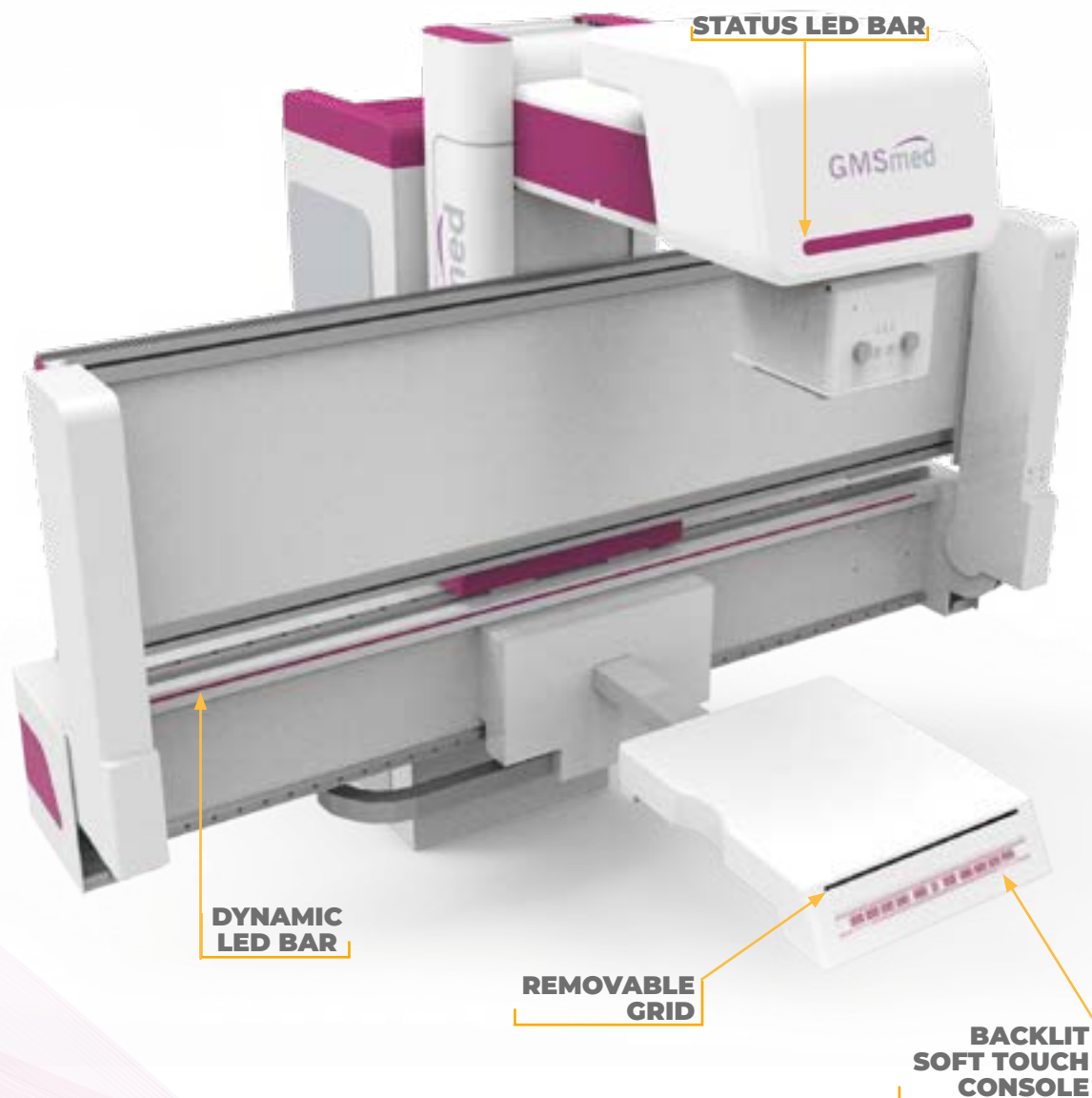
SIREVIX DRF, digital remote controlled system is an ergonomic, highly flexible project, suitable for responding to all present and future diagnostic needs.

With adjustable height, the patient table facilitates access by patients and their transfer to and from the stretcher. All movements have continuously adjustable speed, which guarantees safety and comfort to the patient and the technician.

Thanks to its modularity, the system can be easily implemented from the standard configuration with 90° tilting movement of the patient tabletop only, to the one with synchronized ceiling mounted X-ray tube for lateral exams, including all the operational functions of a modern remote controlled and multifunctional system.



# Efficiency and Functionality



- ▶ Small size system
- ▶ Modular and upgradable
- ▶ All in One (it includes characteristics both of fluoroscopic and multifunctional table)
- ▶ Patient table tilting  $+90^{\circ}/-90^{\circ}$
- ▶ SID up to 200 cm
- ▶  $90^{\circ}$  Tilting tabletop for exams on direct contact with the detector or on stretcher
- ▶ Adjustable patient table height from a minimum of 42 cm from the floor, for an easier accessibility for the patient
- ▶ Soft touch control console on the table
- ▶ Auto-positioning based on the selected exam type
- ▶ Intercom, Alerts and Voice Commands
- ▶ Led bar to support the X-ray technician in use and patient's positioning
- ▶ Tomosynthesis and Tomography
- ▶ Stitching
- ▶ Dual Energy



# High Productivity

## THE SOLUTION IS COMPLETED BY:

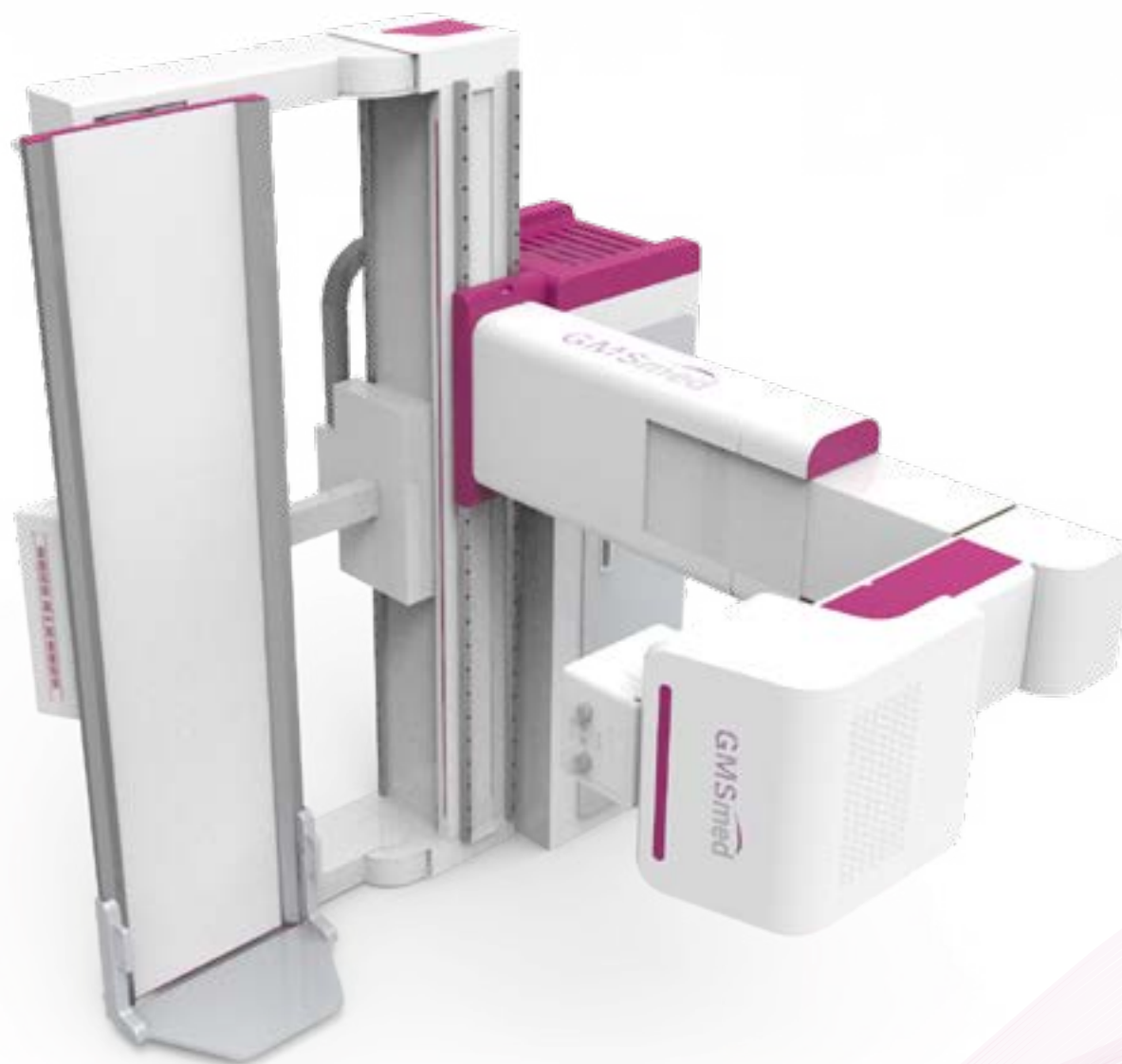
The **X-RAY TUBE**, perfect for high workloads due to its particular constructive qualities (0.6/1.0 mm focal spots and 800 kHU dissipation).

The **HIGH FREQUENCY GENERATOR** - synonymous with precision, quality and safety - with powers up to 100 kW. Equipped with an overload protection system for the RX tubes.

The **COLLIMATOR**, complete with video camera for patient centering without the use of X-rays, also available with touch screen display.

The **DYNAMIC FLAT PANEL**, 43x43 cm, to obtain high quality images, thanks to an excellent resolution, a large acquisition matrix and the preview available in less than 1 second.

Finally, to complete the solution, wi-fi panels are available (particularly indicated for the Emergency Area needs), and a large set of accessories for positioning the patient.



# Intelligence at your service



With simplicity and speed of use, this system quickly and easily makes to deal with any **MODERN RX DIAGNOSTICS** exam.

**CONSOLE EQUIPPED WITH JOYSTICK** to control all table movements.

**TOUCH SCREEN MONITOR** for positioning the table and for displaying all the data related to the type of exam and the position of the table.

**CUSTOMIZATION OF ALL THE MEMORIZED POSITIONS** and self-positioning.

**DYNAMIC 3D VIEW** of the equipment

**LED BAR** to support the technician in use and positioning.



# High performance imaging

Thanks to the partnership with one of the most important Italian software houses, the system is fully integrated with a state-of-the-art image acquisition software.

- ▶ High image quality
- ▶ Modern UI
- ▶ Pulsed fluoroscopy with variable frequency
- ▶ Touch screen
- ▶ Real-time processing
- ▶ Over 98,000 programmable APRs with all the data required for the exam (generator, collimator, table)
- ▶ Dicom 3.0
- ▶ Advanced post-processing
- ▶ Artificial intelligence
- ▶ Grid software
- ▶ Tomosynthesis
- ▶ Stitching
- ▶ Dual Energy





# Always by your side

**OUR TECHNICAL SERVICE CENTRE IS ONLINE 24/7.**

**EMAIL HELP DESK ALWAYS ON.**

**BY PHONE**

**During the normal business hours,  
on-call service at other times.**

**POSSIBILITY TO HAVE**

**Immediate support, thanks to the  
telediagnosis and remote assistance.**



**A real “made in Italy” system:  
R&D, production  
and technical assistance  
are fully Italian.**

**Quality, precision,  
productivity and rapidity of intervention  
are the characteristics that best represent us.**



**Leader in the production of X-Ray equipment, GMS was founded in the '70s by biomedical engineers and technicians, with the aim of developing and marketing diagnostic imaging medical devices. We can currently count more than 100 latest generation digital equipment installed in Italy, with Flat panels. We have recently manufactured and installed over 100 digital equipment.**

**Customer satisfaction is one of the primary factors which GMS MED continuously aims to. For this reason, it adopts a capillary network of regional C-SATs (technical assistance centers), in order to reduce “waiting times” for the functional repairing of its equipment.**

**Thanks to its investments in Research and Development, the obtained high technological level is the real guarantee for the final customer satisfaction. Solid and reliable machines.**

**The continuous evolution of technology in the sector pushes us to search for the maximum “modularity” of the products, to allow the updating of the equipment even in a later time, avoiding replacements and annoying machine stops. We provide our customers with technologically advanced equipment, with updated and performing software.**



**(+39) 0371.59.111**



**www.medicalgms.com**



**info@medicalgms.com**



**Via delle Fontane, 3  
26811 Boffalora d'Adda (LODI) - ITALY**